

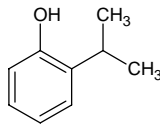
2-isopropylphenol

2-イソプロピルフェノール

Formula C₉H₁₂O

Mol. Wt. 136.19

CAS No. 88-69-7



SEQ No. 1440 フェノール類

FEMA No. 3461

JECFA No. 697

	JFFMA	JECFA	FCC
Chemical name	2-isopropylphenol	2-Isopropylphenol	
Content (NLT)	98.0 % (GC)	98 %	
Refractive index	1.524-1.530 (n _{20D})	1.525-1.530 (n _{20D})	
Specific gravity	0.992-1.002 (d _{20/20})	0.989-0.999 (d _{25/25})	
Acid value (NMT)			
Melting/Congeealing point			
Angular/Specific rotation			
Heavy metals (NMT)			
Solubility in ethanol		miscible	
Other requirements			
Identification*	IR : 1,3,6 MS : 3,4,5 NMR : 3,6	IR	

*References

- 1: Joint FAO/WHO Expert Committee on Food Additive (JECFA)
- 2: Food Chemicals Codex (FCC)
- 3: 有機化合物のスペクトルデータベース SDBS(独立行政法人産業技術総合研究所)
- 4: Wiley's Registry of Mass spectral Database
- 5: NIST/EPA/NIH Mass Spectral Library
- 6: Sigma-Aldrich