

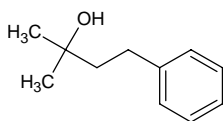
2-methyl-4-phenyl-2-butanol

2-メチル-4-フェニル-2-ブタノール

Formula C₁₁H₁₆O

Mol. Wt. 164.24

CAS No. 103-05-9



SEQ No. 1780 芳香族アルコール類

FEMA No. 3629

JECFA No. 1477

	JFFMA	JECFA	FCC
Chemical name	2-methyl-4-phenyl-2-butanol	2-Methyl-4-phenyl-2-butanol	
Content (NLT)	99.0 % (GC)	97 %	
Refractive index	1.507-1.513 (n _{20D})	1.506-1.512 (n _{20D})	
Specific gravity	0.957-0.964 (d _{20/20})	0.960-0.966 (d _{25/25})	
Acid value (NMT)		2	
Melting/Congeealing point			
Angular/Specific rotation			
Heavy metals (NMT)			
Solubility in ethanol		Soluble	
Other requirements			
Identification*	IR :3,6 MS :3,4,5 NMR :1,3,6	NMR	

*References

- 1: Joint FAO/WHO Expert Committee on Food Additive (JECFA)
- 2: Food Chemicals Codex (FCC)
- 3: 有機化合物のスペクトルデータベース SDBS(独立行政法人産業技術総合研究所)
- 4: Wiley's Registry of Mass spectral Database
- 5: NIST/EPA/NIH Mass Spectral Library
- 6: Sigma-Aldrich