

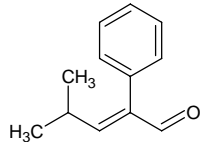
4-methyl-2-phenyl-2-pentenal

4-メチル-2-フェニル-2-ペンテナール

Formula C₁₂H₁₄O

Mol. Wt. 174.24

CAS No. 26643-91-4



SEQ No. 1752 芳香族アルデヒド類

FEMA No. 3200

JECFA No. 1473

	JFFMA	JECFA	FCC
Chemical name	4-methyl-2-phenyl-2-pentenal	4-Methyl-2-phenyl-2-pentenal	
Content (NLT)	90.0 % (GC)	95 %	
Refractive index	1.525-1.540 (n _{20D})	1.533-1.539 (n _{20D})	
Specific gravity	0.978-0.988 (d _{20/20})	0.980-0.986 (d _{25/25})	
Acid value (NMT)	10.0	10	
Melting/Congeealing point			
Angular/Specific rotation			
Heavy metals (NMT)			
Solubility in ethanol		Soluble	
Other requirements			
Identification*	IR :6 MS :4,5 NMR :1	NMR	

*References

- 1: Joint FAO/WHO Expert Committee on Food Additive (JECFA)
- 2: Food Chemicals Codex (FCC)
- 3: 有機化合物のスペクトルデータベース SDBS(独立行政法人産業技術総合研究所)
- 4: Wiley's Registry of Mass spectral Database
- 5: NIST/EPA/NIH Mass Spectral Library
- 6: Sigma-Aldrich