

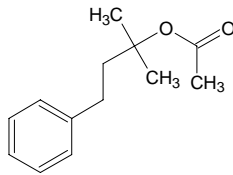
2-methyl-4-phenyl-2-butyl acetate

2-メチル-4-フェニル-2-ブチル アセテート

Formula C₁₃H₁₈O₂

Mol. Wt. 206.28

CAS No. 103-07-1



SEQ No. 620 エステル類

FEMA No. 2735

JECFA No. 1460

| | JFFMA | JECFA | FCC |
|---------------------------|-----------------------------------|-----------------------------------|-----|
| Chemical name | 2-methyl-4-phenyl-2-butyl acetate | 2-Methyl-4-phenyl-2-butyl acetate | |
| Content (NLT) | 96.0 % (GC) | 97 % | |
| Refractive index | 1.484-1.494 (n _{20D}) | 1.488-1.490 (n _{20D}) | |
| Specific gravity | 0.981-0.991 (d _{20/20}) | 0.986-0.990 (15°C) | |
| Acid value (NMT) | 1.0 | 1 | |
| Melting/Congeealing point | | | |
| Angular/Specific rotation | | | |
| Heavy metals (NMT) | | | |
| Solubility in ethanol | | Soluble | |
| Other requirements | | | |
| Identification* | IR : MS : NMR :1 | NMR | |

*References

- 1: Joint FAO/WHO Expert Committee on Food Additive (JECFA)
- 2: Food Chemicals Codex (FCC)
- 3: 有機化合物のスペクトルデータベース SDBS(独立行政法人産業技術総合研究所)
- 4: Wiley's Registry of Mass spectral Database
- 5: NIST/EPA/NIH Mass Spectral Library
- 6: Sigma-Aldrich