

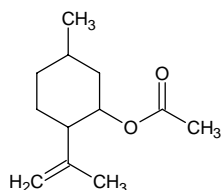
isopulegyl acetate

イソプレギル アセテート

Formula C₁₂H₂₀O₂

Mol. Wt. 196.29

CAS No. 89-49-6



SEQ No. 1444 エステル類

FEMA No. 2965

JECFA No. 756

	JFFMA	JECFA	FCC
Chemical name	isopulegyl acetate	Isopulegyl acetate	
Content (NLT)	95.0 % (GC) sum of isomers	95 % total of isomers	
Refractive index	1.445-1.465 (n _{20D})	1.454-1.457 (n _{20D})	
Specific gravity	0.925-0.947 (d _{20/20})	0.929-0.936 (d _{25/25})	
Acid value (NMT)	1.0	1.0	
Melting/Congeealing point			
Angular/Specific rotation			
Heavy metals (NMT)			
Solubility in ethanol		miscible	
Other requirements			
Identification*	IR : 1 MS : 4,5 NMR :	IR	

*References

- 1: Joint FAO/WHO Expert Committee on Food Additive (JECFA)
- 2: Food Chemicals Codex (FCC)
- 3: 有機化合物のスペクトルデータベース SDBS(独立行政法人産業技術総合研究所)
- 4: Wiley's Registry of Mass spectral Database
- 5: NIST/EPA/NIH Mass Spectral Library
- 6: Sigma-Aldrich