

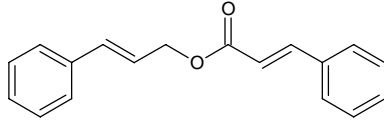
# cinnamyl cinnamate

## シンナミル シンナメート

Formula C<sub>18</sub>H<sub>16</sub>O<sub>2</sub>

Mol. Wt. 264.32

CAS No. 122-69-0



SEQ No. 383 エステル類

FEMA No. 2298

JECFA No. 673

	JFFMA	JECFA	FCC
Chemical name	cinnamyl cinnamate	Cinnamyl cinnamate	Cinnamyl Cinnamate
Content (NLT)	95.0-100.5 % (Chem)	95 % by ester determination	95.0 % GC(M-1b)
Refractive index			
Specific gravity			
Acid value (NMT)	1.0	2.0	2.0
Melting/Congeeing point	MP: 40 to 46°C	MP: min. 42°C	
Angular/Specific rotation			
Heavy metals (NMT)			
Solubility in ethanol		moderately soluble	1 mL in 1 mL 95% alc
Other requirements		equivalence factor for assay = 132.16	
Identification*	IR :1,2 MS :4,5 NMR :	IR	IR

### \*References

- 1: Joint FAO/WHO Expert Committee on Food Additive (JECFA)
- 2: Food Chemicals Codex (FCC)
- 3: 有機化合物のスペクトルデータベース SDBS(独立行政法人産業技術総合研究所)
- 4: Wiley's Registry of Mass spectral Database
- 5: NIST/EPA/NIH Mass Spectral Library
- 6: Sigma-Aldrich