

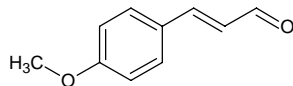
4'-methoxycinnamaldehyde

4'-メトキシシシナムアルデヒド

Formula C₁₀H₁₀O₂

Mol. Wt. 162.19

CAS No. 1963-36-6



SEQ No. 1567 芳香族アルデヒド類

FEMA No. 3567

JECFA No. 687

	JFFMA	JECFA	FCC
Chemical name	4'-methoxycinnamaldehyde	p-Methoxycinnamaldehyde	
Content (NLT)	96.0 % (GC)	96 %	
Refractive index			
Specific gravity			
Acid value (NMT)	10.0	4.0	
Melting/Congeealing point	MP: 56 to 63°C	MP: 57 to 58°C	
Angular/Specific rotation			
Heavy metals (NMT)			
Solubility in ethanol		moderately soluble	
Other requirements			
Identification*	IR :1 MS :4,5 NMR :	IR	

*References

- 1: Joint FAO/WHO Expert Committee on Food Additive (JECFA)
- 2: Food Chemicals Codex (FCC)
- 3: 有機化合物のスペクトルデータベース SDBS(独立行政法人産業技術総合研究所)
- 4: Wiley's Registry of Mass spectral Database
- 5: NIST/EPA/NIH Mass Spectral Library
- 6: Sigma-Aldrich