

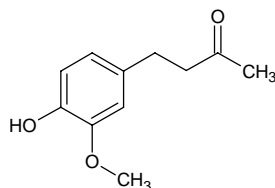
zingerone

ジンゲロン

Formula C₁₁H₁₄O₃

Mol. Wt. 194.23

CAS No. 122-48-5



SEQ No. 2512 ケトン類

FEMA No. 3124

JECFA No. 730

| | JFFMA | JECFA | FCC |
|---------------------------|---------------------------------|--------------------|-----------------------------------|
| Chemical name | zingerone | Zingerone | Zingerone |
| Content (NLT) | 95.0 % (GC) | 95 % | 95.0 % GC(M-1b) |
| Refractive index | | | 1.538-1.545 (n _{20D}) |
| Specific gravity | | | 1.136-1.140 (d _{25/25}) |
| Acid value (NMT) | | | |
| Melting/Congeeing point | MP: 38 to 44°C | MP: 40 to 41°C | |
| Angular/Specific rotation | | | |
| Heavy metals (NMT) | | | |
| Solubility in ethanol | | moderately soluble | |
| Other requirements | | | |
| Identification* | IR : 1,2,5 MS : 4,5 NMR : | IR | IR |

*References

- 1: Joint FAO/WHO Expert Committee on Food Additive (JECFA)
- 2: Food Chemicals Codex (FCC)
- 3: 有機化合物のスペクトルデータベース SDBS(独立行政法人産業技術総合研究所)
- 4: Wiley's Registry of Mass spectral Database
- 5: NIST/EPA/NIH Mass Spectral Library
- 6: Sigma-Aldrich