

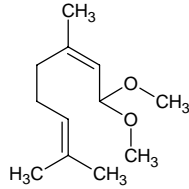
# citral dimethyl acetal

## シト랄ル ジメチル アセタール

Formula C<sub>12</sub>H<sub>22</sub>O<sub>2</sub>

Mol. Wt. 198.30

CAS No. 7549-37-3



SEQ No. 394 エーテル類

FEMA No. 2305

JECFA No. 944

	JFFMA	JECFA	FCC
Chemical name	citral dimethyl acetal	Citral dimethyl acetal	
Content (NLT)	95.0 % (GC) sum of isomers	92 % sum of isomers	
Refractive index	1.450-1.460 (n <sub>20D</sub> )	1.450-1.463 (n <sub>20D</sub> )	
Specific gravity	0.885-0.895 (d <sub>20/20</sub> )	0.881-0.893 (d <sub>25/25</sub> )	
Acid value (NMT)	1.0	2.0	
Melting/Congeealing point			
Angular/Specific rotation			
Heavy metals (NMT)			
Solubility in ethanol		miscible at room temperature	
Other requirements		Minimum assay (sum of isomers + hemiacetals + citral): 98%	
Identification*	IR : 1,5,6 MS : 4 NMR : 6	IR	

### \*References

- 1: Joint FAO/WHO Expert Committee on Food Additive (JECFA)
- 2: Food Chemicals Codex (FCC)
- 3: 有機化合物のスペクトルデータベース SDBS(独立行政法人産業技術総合研究所)
- 4: Wiley's Registry of Mass spectral Database
- 5: NIST/EPA/NIH Mass Spectral Library
- 6: Sigma-Aldrich