

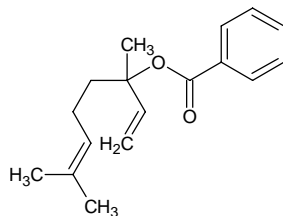
# linalyl benzoate

## リナリル ベンゾエート

Formula C<sub>17</sub>H<sub>22</sub>O<sub>2</sub>

Mol. Wt. 258.36

CAS No. 126-64-7



SEQ No. 1477 エステル類

FEMA No. 2638

JECFA No. 859

	JFFMA	JECFA	FCC
Chemical name	linalyl benzoate	Linalyl benzoate	Linalyl Benzoate
Content (NLT)	92.0 % (GC)	95 % by chemical analysis	75.0 % GC(M-1b)
Refractive index	1.505-1.520 (n <sub>20D</sub> )	1.505-1.526 (n <sub>20D</sub> )	1.505-1.520 (n <sub>20D</sub> )
Specific gravity	0.979-0.989 (d <sub>20/20</sub> )	0.978-0.999 (d <sub>25/25</sub> )	0.980-0.999 (d <sub>25/25</sub> )
Acid value (NMT)	2.0	5.0	5.0
Melting/Congeealing point			
Angular/Specific rotation			
Heavy metals (NMT)			
Solubility in ethanol		miscible at room temperature	1 mL in 1 mL 90% alc gives clear soln
Other requirements			
Identification*	IR :1,2 MS :4 NMR :	IR	IR

### \*References

- 1: Joint FAO/WHO Expert Committee on Food Additive (JECFA)
- 2: Food Chemicals Codex (FCC)
- 3: 有機化合物のスペクトルデータベース SDBS(独立行政法人産業技術総合研究所)
- 4: Wiley's Registry of Mass spectral Database
- 5: NIST/EPA/NIH Mass Spectral Library
- 6: Sigma-Aldrich