

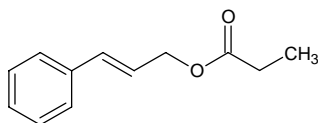
cinnamyl propionate

シンナミル プロピオネート

Formula C₁₂H₁₄O₂

Mol. Wt. 190.24

CAS No. 103-56-0



SEQ No. 389 エステル類

FEMA No. 2301

JECFA No. 651

| | JFFMA | JECFA | FCC |
|---------------------------|-----------------------------------|-----------------------------------|-----------------------------------|
| Chemical name | cinnamyl propionate | Cinnamyl propionate | Cinnamyl Propionate |
| Content (NLT) | 97.0 % (GC) | 98 % | 98.0 % one isomer /GC(M-1b) |
| Refractive index | 1.531-1.537 (n _{20D}) | 1.532-1.537 (n _{20D}) | 1.532-1.537 (n _{20D}) |
| Specific gravity | 1.032-1.039 (d _{20/20}) | 1.029-1.034 (d _{25/25}) | 1.029-1.035 (d _{25/25}) |
| Acid value (NMT) | 1.0 | 3.0 | 3.0 |
| Melting/Congeealing point | | | |
| Angular/Specific rotation | | | |
| Heavy metals (NMT) | | | |
| Solubility in ethanol | | miscible | |
| Other requirements | | | |
| Identification* | IR :1,2 MS :4,5 NMR : | IR | IR |

*References

- 1: Joint FAO/WHO Expert Committee on Food Additive (JECFA)
- 2: Food Chemicals Codex (FCC)
- 3: 有機化合物のスペクトルデータベース SDBS(独立行政法人産業技術総合研究所)
- 4: Wiley's Registry of Mass spectral Database
- 5: NIST/EPA/NIH Mass Spectral Library
- 6: Sigma-Aldrich