

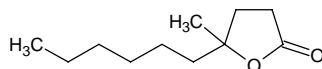
# 4-methyl-4-decanolide

## 4-メチル-4-デカノリド

Formula C<sub>11</sub>H<sub>20</sub>O<sub>2</sub>

Mol. Wt. 184.28

CAS No. 7011-83-8



SEQ No. 1652 ラクトン類

FEMA No. 3786

JECFA No. 250

	JFFMA	JECFA	FCC
Chemical name	4-methyl-4-decanolide	gamma-Methyldecalactone	
Content (NLT)	95.0 % (GC)	95.0 %	
Refractive index	1.441-1.455 (n <sub>20D</sub> )	1.440-1.460 (n <sub>20D</sub> )	
Specific gravity	0.940-0.950 (d <sub>20/20</sub> )	0.930-0.950 (d <sub>25/25</sub> )	
Acid value (NMT)	3.0		
Melting/Congeeing point			
Angular/Specific rotation			
Heavy metals (NMT)			
Solubility in ethanol			
Other requirements			
Identification*	IR :1,3 MS :3,4 NMR :6	IR	

### \*References

- 1: Joint FAO/WHO Expert Committee on Food Additive (JECFA)
- 2: Food Chemicals Codex (FCC)
- 3: 有機化合物のスペクトルデータベース SDBS(独立行政法人産業技術総合研究所)
- 4: Wiley's Registry of Mass spectral Database
- 5: NIST/EPA/NIH Mass Spectral Library
- 6: Sigma-Aldrich