

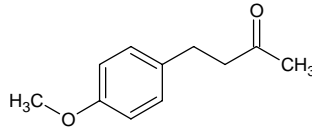
anisylacetone

アニシルアセトン

Formula C₁₁H₁₄O₂

Mol. Wt. 178.23

CAS No. 104-20-1



SEQ No. 188 ケトン類

FEMA No. 2672

JECFA No. 818

	JFFMA	JECFA	FCC
Chemical name	anisylacetone	(p-Methoxyphenyl)-2-butanone	4-p-Methoxyphenyl-2-butanone
Content (NLT)	95.0 % (GC)	96 %	98.0 % GC(M-1a)
Refractive index	1.515-1.525 (n _{20D})	1.515-1.525 (n _{20D})	1.517-1.521 (n _{20D})
Specific gravity	1.043-1.053 (d _{20/20})	1.041-1.050 (d _{25/25})	1.042-1.048 (d _{25/25})
Acid value (NMT)			
Melting/Congeealing point			
Angular/Specific rotation			
Heavy metals (NMT)			
Solubility in ethanol		miscible at room temperature	1 mL in 1 mL 95% alc
Other requirements			
Identification*	IR : 1,2,3 MS : 3,4,5 NMR : 3	IR	IR

*References

- 1: Joint FAO/WHO Expert Committee on Food Additive (JECFA)
- 2: Food Chemicals Codex (FCC)
- 3: 有機化合物のスペクトルデータベース SDBS(独立行政法人産業技術総合研究所)
- 4: Wiley's Registry of Mass spectral Database
- 5: NIST/EPA/NIH Mass Spectral Library
- 6: Sigma-Aldrich