

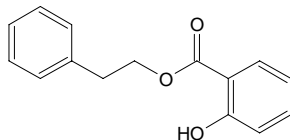
phenethyl salicylate

フェネチル サリシレート

Formula C₁₅H₁₄O₃

Mol. Wt. 242.27

CAS No. 87-22-9



SEQ No. 2123 エステル類

FEMA No. 2868

JECFA No. 905

	JFFMA	JECFA	FCC
Chemical name	phenethyl salicylate	Phenethyl salicylate	Phenethyl Salicylate
Content (NLT)	98.0 % (GC)	98 %	98.0 % GC(M-1b)
Refractive index			
Specific gravity			
Acid value (NMT)	1.0	1.0	1.0 (phenol red TS)
Melting/Congeeing point	MP: 41 to 46°C	MP: 44°C	SP: NLT 41°C
Angular/Specific rotation			
Heavy metals (NMT)			
Solubility in ethanol		soluble (1 g in 20 ml of 95% ethanol)	1 g in 20 mL 95% alc gives clear soln
Other requirements			
Identification*	IR : 1,2,5 MS : 4,5 NMR :	IR	IR

*References

- 1: Joint FAO/WHO Expert Committee on Food Additive (JECFA)
- 2: Food Chemicals Codex (FCC)
- 3: 有機化合物のスペクトルデータベース SDBS(独立行政法人産業技術総合研究所)
- 4: Wiley's Registry of Mass spectral Database
- 5: NIST/EPA/NIH Mass Spectral Library
- 6: Sigma-Aldrich