

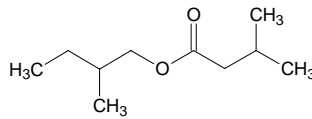
## 2-methylbutyl isovalerate

### 2-メチルブチル イソバレレート

Formula C<sub>10</sub>H<sub>20</sub>O<sub>2</sub>

Mol. Wt. 172.26

CAS No. 2445-77-4



SEQ No. 1816 エステル類

FEMA No. 3506

JECFA No. 204

|                           | JFFMA                             | JECFA                             | FCC                               |
|---------------------------|-----------------------------------|-----------------------------------|-----------------------------------|
| Chemical name             | 2-methylbutyl isovalerate         | 2-Methylbutyl 3-methylbutanoate   | 2-Methylbutyl Isovalerate         |
| Content (NLT)             | 98.0 % (GC)                       | 98 %                              | 98.0 %<br>GC(M-1a)                |
| Refractive index          | 1.410-1.419 (n <sub>20D</sub> )   | 1.394 (n <sub>20D</sub> )         | 1.413-1.416 (n <sub>20D</sub> )   |
| Specific gravity          | 0.856-0.864 (d <sub>20/20</sub> ) | 0.852-0.857 (d <sub>25/25</sub> ) | 0.852-0.857 (d <sub>25/25</sub> ) |
| Acid value (NMT)          | 1.0                               |                                   | 2.0                               |
| Melting/Congeealing point |                                   |                                   |                                   |
| Angular/Specific rotation |                                   |                                   |                                   |
| Heavy metals (NMT)        |                                   |                                   |                                   |
| Solubility in ethanol     |                                   |                                   |                                   |
| Other requirements        |                                   |                                   |                                   |
| Identification*           | IR :1<br>MS :4,5<br>NMR :6        | IR                                |                                   |

\*References

- 1: Joint FAO/WHO Expert Committee on Food Additive (JECFA)
- 2: Food Chemicals Codex (FCC)
- 3: 有機化合物のスペクトルデータベース SDBS(独立行政法人産業技術総合研究所)
- 4: Wiley's Registry of Mass spectral Database
- 5: NIST/EPA/NIH Mass Spectral Library
- 6: Sigma-Aldrich