

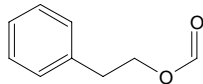
# phenethyl formate

## フェネチル ホーマート

Formula C<sub>9</sub>H<sub>10</sub>O<sub>2</sub>

Mol. Wt. 150.17

CAS No. 104-62-1



SEQ No. 2110 エステル類

FEMA No. 2864

JECFA No. 988

	JFFMA	JECFA	FCC
Chemical name	phenethyl formate	Phenethyl formate	
Content (NLT)	95.0 % (GC)	96 %	
Refractive index	1.503-1.513 (n <sub>20D</sub> )	1.503-1.513 (n <sub>20D</sub> )	
Specific gravity	1.060-1.070 (d <sub>20/20</sub> )	1.056-1.065 (d <sub>25/25</sub> )	
Acid value (NMT)	2.0	1.0	
Melting/Congeealing point			
Angular/Specific rotation			
Heavy metals (NMT)			
Solubility in ethanol		Miscible at room temperature	
Other requirements			
Identification*	IR :3 MS :3,4,5 NMR :1,3	NMR	

### \*References

- 1: Joint FAO/WHO Expert Committee on Food Additive (JECFA)
- 2: Food Chemicals Codex (FCC)
- 3: 有機化合物のスペクトルデータベース SDBS(独立行政法人産業技術総合研究所)
- 4: Wiley's Registry of Mass spectral Database
- 5: NIST/EPA/NIH Mass Spectral Library
- 6: Sigma-Aldrich