

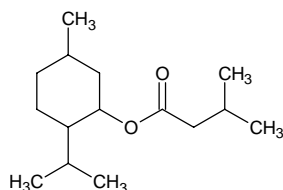
menthyl isovalerate

メントール イソバレレート

Formula C₁₅H₂₈O₂

Mol. Wt. 240.38

CAS No. 16409-46-4



SEQ No. 1527 エステル類

FEMA No. 2669

JECFA No. 432

	JFFMA	JECFA	FCC
Chemical name	menthyl isovalerate	Menthyl isovalerate	
Content (NLT)	95.0 % (GC)	96 %	
Refractive index	1.442-1.452 (n _{20D})	1.445-1.450 (n _{20D})	
Specific gravity	0.900-0.910 (d _{20/20})	0.900-0.910 (d _{25/25})	
Acid value (NMT)	1.0	0.1	
Melting/Congeealing point			
Angular/Specific rotation		OR: -59 to -54°	
Heavy metals (NMT)			
Solubility in ethanol		1 ml in 10 ml 80% alcohol	
Other requirements			
Identification*	IR : 1,6 MS : 4,5 NMR :	IR	

*References

- 1: Joint FAO/WHO Expert Committee on Food Additive (JECFA)
- 2: Food Chemicals Codex (FCC)
- 3: 有機化合物のスペクトルデータベース SDBS(独立行政法人産業技術総合研究所)
- 4: Wiley's Registry of Mass spectral Database
- 5: NIST/EPA/NIH Mass Spectral Library
- 6: Sigma-Aldrich