

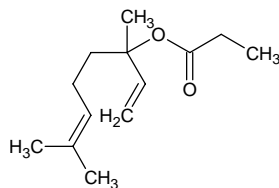
linalyl propionate

リナリル プロピオネート

Formula C₁₃H₂₂O₂

Mol. Wt. 210.31

CAS No. 144-39-8



SEQ No. 1486 エステル類

FEMA No. 2645

JECFA No. 360

	JFFMA	JECFA	FCC
Chemical name	linalyl propionate	Linalyl propionate	Linalyl Propionate
Content (NLT)	93.0 % (GC)	92 %	92.0 % GC(M-1b)
Refractive index	1.445-1.455 (n _{20D})	1.449-1.454 (n _{20D})	1.449-1.454 (n _{20D})
Specific gravity	0.893-0.903 (d _{20/20})	0.893-0.902 (d _{25/25})	0.893-0.902 (d _{25/25})
Acid value (NMT)	1.0	1.0	1.0
Melting/Congeeing point			
Angular/Specific rotation		OR: -1 to +1°	
Heavy metals (NMT)			
Solubility in ethanol		1 ml in 7 ml 70% alcohol; 1 ml in 2 ml 80% alcohol	1 mL in 2 mL 80% alc
Other requirements		2-5% linalool	
Identification*	IR : 1,2,6 MS : 4,5 NMR :	IR	IR

*References

- 1: Joint FAO/WHO Expert Committee on Food Additive (JECFA)
- 2: Food Chemicals Codex (FCC)
- 3: 有機化合物のスペクトルデータベース SDBS(独立行政法人産業技術総合研究所)
- 4: Wiley's Registry of Mass spectral Database
- 5: NIST/EPA/NIH Mass Spectral Library
- 6: Sigma-Aldrich