

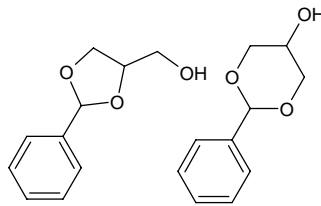
benzaldehyde glyceryl acetal

ベンズアルデヒド グリセリル アセタール

Formula C₁₀H₁₂O₃

Mol. Wt. 180.20

CAS No. 1319-88-6



SEQ No. 205 エーテル類

FEMA No. 2129

JECFA No. 838

	JFFMA	JECFA	FCC
Chemical name	benzaldehyde glyceryl acetal	Benzaldehyde glyceryl acetal	Benzaldehyde Glyceryl Acetal
Content (NLT)	95.0 % (GC) sum of isomers	98 % sum of isomers	95.0 % sum of four isomers; each isomer 5% - 40% /GC(M- 1a)
Refractive index	1.532-1.542 (n _{20D})	1.532-1.542 (n _{20D})	1.535-1.541 (n _{20D})
Specific gravity	1.184-1.197 (d _{20/20})	1.181-1.193 (d _{25/25})	1.181-1.191 (d _{25/25})
Acid value (NMT)	2.0	2.0	2.0
Melting/Congeeing point			
Angular/Specific rotation			
Heavy metals (NMT)			
Solubility in ethanol		miscible at room temperature	1 mL in 1 mL 95% alc
Other requirements			
Identification*	IR :1,2 MS :4 NMR :	IR	IR

*References

- 1: Joint FAO/WHO Expert Committee on Food Additive (JECFA)
- 2: Food Chemicals Codex (FCC)
- 3: 有機化合物のスペクトルデータベース SDBS(独立行政法人産業技術総合研究所)
- 4: Wiley's Registry of Mass spectral Database
- 5: NIST/EPA/NIH Mass Spectral Library
- 6: Sigma-Aldrich