

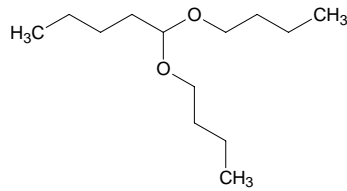
# valeraldehyde dibutyl acetal

## バレラルデヒド ジブチル アセタール

Formula C<sub>13</sub>H<sub>28</sub>O<sub>2</sub>

Mol. Wt. 216.36

CAS No. 13112-65-7



SEQ No. 2478 エーテル類

FEMA No. 4375

JECFA No. 1731

	JFFMA	JECFA	FCC
Chemical name	valeraldehyde dibutyl acetal	Valeraldehyde dibutyl acetal	
Content (NLT)	97.0 % (GC)	97 %	
Refractive index	1.417-1.423 (n <sub>20D</sub> )	1.417-1.423 (n <sub>20D</sub> )	
Specific gravity	0.833-0.839 (d <sub>20/20</sub> )	0.833-0.839 (d <sub>25/25</sub> )	
Acid value (NMT)	1.0		
Melting/Congeaing point			
Angular/Specific rotation			
Heavy metals (NMT)			
Solubility in ethanol		Soluble	
Other requirements			
Identification*	IR :3 MS :1,3 NMR :3	MS	

### \*References

- 1: Joint FAO/WHO Expert Committee on Food Additive (JECFA)
- 2: Food Chemicals Codex (FCC)
- 3: 有機化合物のスペクトルデータベース SDBS(独立行政法人産業技術総合研究所)
- 4: Wiley's Registry of Mass spectral Database
- 5: NIST/EPA/NIH Mass Spectral Library
- 6: Sigma-Aldrich