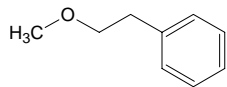


# methyl phenethyl ether

## メチル フェネチル エーテル

Formula C<sub>9</sub>H<sub>12</sub>O



Mol. Wt. 136.19

CAS No. 3558-60-9

SEQ No. 1700 エーテル類

FEMA No. 3198

JECFA No. 1254

	JFFMA	JECFA	FCC
Chemical name	methyl phenethyl ether	Methyl phenethyl ether	
Content (NLT)	98.0 % (GC)	99 %	
Refractive index	1.494-1.508 (n <sub>20D</sub> )	1.497-1.501 (n <sub>20D</sub> )	
Specific gravity	0.949-0.960 (d <sub>20/20</sub> )	0.945-0.951 (d <sub>25/25</sub> )	
Acid value (NMT)		1	
Melting/Congeealing point			
Angular/Specific rotation			
Heavy metals (NMT)			
Solubility in ethanol		soluble	
Other requirements			
Identification*	IR :3 MS :3,4,5 NMR :1,3	NMR	

### \*References

- 1: Joint FAO/WHO Expert Committee on Food Additive (JECFA)
- 2: Food Chemicals Codex (FCC)
- 3: 有機化合物のスペクトルデータベース SDBS(独立行政法人産業技術総合研究所)
- 4: Wiley's Registry of Mass spectral Database
- 5: NIST/EPA/NIH Mass Spectral Library
- 6: Sigma-Aldrich