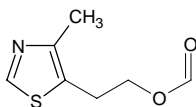


## 2-(4-methyl-5-thiazolyl)ethyl formate

### 2-(4-メチル-5-チアゾリル)エチル ホーメート

Formula C<sub>7</sub>H<sub>9</sub>NO<sub>2</sub>S

Mol. Wt. 171.22



CAS No. 90731-56-9

SEQ No. 2309 エステル類

FEMA No. 4275

JECFA No. 1751

	JFFMA	JECFA	FCC
Chemical name	2-(4-methyl-5-thiazolyl)ethyl formate	2-(5-Methyl-4-thiazolyl)ethyl formate	
Content (NLT)	95.0 % (GC)	95 %	
Refractive index	1.518-1.524 (n <sub>20D</sub> )	1.518-1.524 (n <sub>20D</sub> )	
Specific gravity	1.215-1.221 (d <sub>20/20</sub> )	1.215-1.221 (d <sub>25/25</sub> )	
Acid value (NMT)	2.0	2	
Melting/Congeealing point			
Angular/Specific rotation			
Heavy metals (NMT)			
Solubility in ethanol		Soluble	
Other requirements			
Identification*	IR :3 MS :1,3 NMR :1,3	HNMR MS	

#### \*References

- 1: Joint FAO/WHO Expert Committee on Food Additive (JECFA)
- 2: Food Chemicals Codex (FCC)
- 3: 有機化合物のスペクトルデータベース SDBS(独立行政法人産業技術総合研究所)
- 4: Wiley's Registry of Mass spectral Database
- 5: NIST/EPA/NIH Mass Spectral Library
- 6: Sigma-Aldrich