

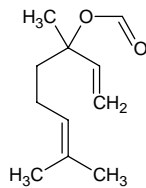
# linalyl formate

## リナリル ホーマート

Formula C<sub>11</sub>H<sub>18</sub>O<sub>2</sub>

Mol. Wt. 182.26

CAS No. 115-99-1



SEQ No. 1480 エステル類

FEMA No. 2642

JECFA No. 358

	JFFMA	JECFA	FCC
Chemical name	linalyl formate	Linalyl formate	Linalyl Formate
Content (NLT)	90.0 % (GC)	90 %	90.0 % GC(M-1b)
Refractive index	1.450-1.463 (n <sub>20D</sub> )	1.453-1.458 (n <sub>20D</sub> )	1.453-1.458 (n <sub>20D</sub> )
Specific gravity	0.910-0.922 (d <sub>20/20</sub> )	0.910-0.918 (d <sub>25/25</sub> )	0.910-0.918 (d <sub>25/25</sub> )
Acid value (NMT)	3.0	3	3.0
Melting/Congeealing point			
Angular/Specific rotation			
Heavy metals (NMT)			
Solubility in ethanol		1 ml in 6 ml 70% alcohol	1 mL in 6 mL 70% alc
Other requirements		SC: linalool	
Identification*	IR :1,2 MS :4,5 NMR :6	IR	IR

### \*References

- 1: Joint FAO/WHO Expert Committee on Food Additive (JECFA)
- 2: Food Chemicals Codex (FCC)
- 3: 有機化合物のスペクトルデータベース SDBS(独立行政法人産業技術総合研究所)
- 4: Wiley's Registry of Mass spectral Database
- 5: NIST/EPA/NIH Mass Spectral Library
- 6: Sigma-Aldrich