

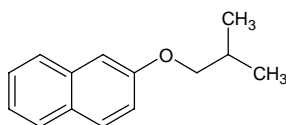
# isobutyl 2-naphthyl ether

## イソブチル 2-ナフチル エーテル

Formula C<sub>14</sub>H<sub>16</sub>O

Mol. Wt. 200.28

CAS No. 2173-57-1



SEQ No. 1339 フェノールエーテル類

FEMA No. 3719

JECFA No. 1259

	JFFMA	JECFA	FCC
Chemical name	isobutyl 2-naphthyl ether	beta-Naphthyl isobutyl ether	
Content (NLT)	97.0 % (GC)	98 %	
Refractive index			
Specific gravity			
Acid value (NMT)		1	
Melting/Congeealing point	MP: 30 to 34°C	MP: 33°C	
Angular/Specific rotation			
Heavy metals (NMT)			
Solubility in ethanol		soluble	
Other requirements			
Identification*	IR : MS : NMR :1	NMR	

### \*References

- 1: Joint FAO/WHO Expert Committee on Food Additive (JECFA)
- 2: Food Chemicals Codex (FCC)
- 3: 有機化合物のスペクトルデータベース SDBS(独立行政法人産業技術総合研究所)
- 4: Wiley's Registry of Mass spectral Database
- 5: NIST/EPA/NIH Mass Spectral Library
- 6: Sigma-Aldrich