

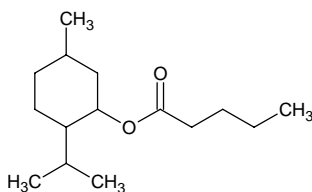
menthyl valerate

メントールバレレート

Formula C₁₅H₂₈O₂

Mol. Wt. 240.38

CAS No. 89-47-4
64129-94-8



SEQ No. 1533 エステル類

FEMA No. 4156

JECFA No. 1852

| | JFFMA | JECFA | FCC |
|---------------------------|-----------------------------------|-----------------------------------|-----|
| Chemical name | menthyl valerate | Menthyl valerate | |
| Content (NLT) | 98.0 % (GC) | 95 % | |
| Refractive index | 1.445-1.451 (n _{20D}) | 1.445-1.451 (n _{20D}) | |
| Specific gravity | 0.905-0.911 (d _{20/20}) | 0.903-0.911 (d _{25/25}) | |
| Acid value (NMT) | 1.0 | 1.0 | |
| Melting/Congeealing point | | | |
| Angular/Specific rotation | | | |
| Heavy metals (NMT) | | | |
| Solubility in ethanol | | Soluble | |
| Other requirements | | | |
| Identification* | IR : MS :1,4 NMR :1 | HNMR MS | |

*References

- 1: Joint FAO/WHO Expert Committee on Food Additive (JECFA)
- 2: Food Chemicals Codex (FCC)
- 3: 有機化合物のスペクトルデータベース SDBS(独立行政法人産業技術総合研究所)
- 4: Wiley's Registry of Mass spectral Database
- 5: NIST/EPA/NIH Mass Spectral Library
- 6: Sigma-Aldrich