

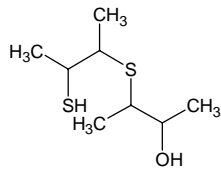
3-[(2-mercapto-1-methylpropyl)thio]-2-butanol

3-[(2-メルカプト-1-メチルプロピル)チオ]-2-ブタノール

Formula C₈H₁₈OS₂

Mol. Wt. 194.36

CAS No. 54957-02-7



SEQ No. 1534 チオール類

FEMA No. 3509

JECFA No. 547

| | JFFMA | JECFA | FCC |
|---------------------------|---|--|-----|
| Chemical name | 3-[(2-mercapto-1-methylpropyl)thio]-2-butanol | alpha-Methyl-beta-hydroxypropyl alpha-methyl-beta-mercaptopropyl sulfide | |
| Content (NLT) | 94.0 % (GC) | 99 % | |
| Refractive index | 1.515-1.525 (n _{20D}) | 1.516-1.526 (n _{20D}) | |
| Specific gravity | 1.042-1.062 (d _{20/20}) | 1.040 (d _{20/4}) | |
| Acid value (NMT) | | | |
| Melting/Congeaing point | | | |
| Angular/Specific rotation | | | |
| Heavy metals (NMT) | | | |
| Solubility in ethanol | | | |
| Other requirements | | | |
| Identification* | IR :1 MS :4 NMR :1 | IR, NMR | |

*References

- 1: Joint FAO/WHO Expert Committee on Food Additive (JECFA)
- 2: Food Chemicals Codex (FCC)
- 3: 有機化合物のスペクトルデータベース SDBS(独立行政法人産業技術総合研究所)
- 4: Wiley's Registry of Mass spectral Database
- 5: NIST/EPA/NIH Mass Spectral Library
- 6: Sigma-Aldrich