

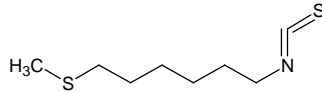
# 6-(methylthio)hexyl isothiocyanate

## 6-(メチルチオ)ヘキシル イソチオシアネート

Formula C<sub>8</sub>H<sub>15</sub>NS<sub>2</sub>

Mol. Wt. 189.34

CAS No. 4430-39-1



SEQ No. 1882 イソチオシアネート類

FEMA No. 4415

JECFA No. 1897

	JFFMA	JECFA	FCC
Chemical name	6-(methylthio)hexyl isothiocyanate	6-(Methylthio)hexyl isothiocyanate	
Content (NLT)	98.0 % (GC)	95 %	
Refractive index	1.534-1.540 (n <sub>20D</sub> )	1.534-1.540 (n <sub>20D</sub> )	
Specific gravity	1.035-1.041 (d <sub>20/20</sub> )	1.035-1.041 (20°C)	
Acid value (NMT)			
Melting/Congeealing point			
Angular/Specific rotation			
Heavy metals (NMT)			
Solubility in ethanol		Soluble	
Other requirements			
Identification*	IR :3 MS :1,3 NMR :3	MS	

### \*References

- 1: Joint FAO/WHO Expert Committee on Food Additive (JECFA)
- 2: Food Chemicals Codex (FCC)
- 3: 有機化合物のスペクトルデータベース SDBS(独立行政法人産業技術総合研究所)
- 4: Wiley's Registry of Mass spectral Database
- 5: NIST/EPA/NIH Mass Spectral Library
- 6: Sigma-Aldrich