

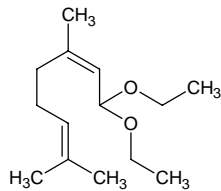
citral diethyl acetal

シトラール ジエチル アセタール

Formula C₁₄H₂₆O₂

Mol. Wt. 226.35

CAS No. 7492-66-2



SEQ No. 393 エーテル類

FEMA No. 2304

JECFA No. 948

	JFFMA	JECFA	FCC
Chemical name	citral diethyl acetal	Citral diethyl acetal	
Content (NLT)	95.0 % (GC)	92 % sum of cis- and trans- isomers	
Refractive index	1.446-1.459 (n _{20D})	1.445-1.455 (n _{20D})	
Specific gravity	0.864-0.882 (d _{20/20})	0.864-0.879 (d _{25/25})	
Acid value (NMT)	2.0	2.0	
Melting/Congeealing point			
Angular/Specific rotation			
Heavy metals (NMT)			
Solubility in ethanol		miscible at room temperature	
Other requirements		Minimum assay (sum of isomers + hemiacetals + citral): 98%	
Identification*	IR : 1,6 MS : 4,5 NMR :	IR	

*References

- 1: Joint FAO/WHO Expert Committee on Food Additive (JECFA)
- 2: Food Chemicals Codex (FCC)
- 3: 有機化合物のスペクトルデータベース SDBS(独立行政法人産業技術総合研究所)
- 4: Wiley's Registry of Mass spectral Database
- 5: NIST/EPA/NIH Mass Spectral Library
- 6: Sigma-Aldrich