

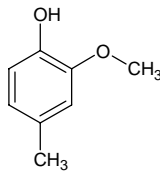
creosol

クレオゾール

Formula C₈H₁₀O₂

Mol. Wt. 138.16

CAS No. 93-51-6



SEQ No. 419 フェノール類

FEMA No. 2671

JECFA No. 715

	JFFMA	JECFA	FCC
Chemical name	creosol	2-Methoxy-4-methylphenol	
Content (NLT)	95.0 % (GC)	98 %	
Refractive index	1.531-1.541 (n _{20D})	1.534-1.538 (n _{20D})	
Specific gravity	1.089-1.099 (d _{20/20})	1.089-1.096 (d _{25/25})	
Acid value (NMT)			
Melting/Congeealing point			
Angular/Specific rotation			
Heavy metals (NMT)			
Solubility in ethanol		miscible	
Other requirements			
Identification*	IR :1,3 MS :3,4,5 NMR :3,6	IR	

*References

- 1: Joint FAO/WHO Expert Committee on Food Additive (JECFA)
- 2: Food Chemicals Codex (FCC)
- 3: 有機化合物のスペクトルデータベース SDBS(独立行政法人産業技術総合研究所)
- 4: Wiley's Registry of Mass spectral Database
- 5: NIST/EPA/NIH Mass Spectral Library
- 6: Sigma-Aldrich