

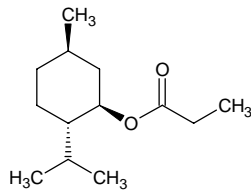
# l-menthyl propionate

## l-メントール プロピオネート

Formula C<sub>13</sub>H<sub>24</sub>O<sub>2</sub>

Mol. Wt. 212.33

CAS No. 4951-48-8



SEQ No. 1530 エステル類

FEMA No. 4510

JECFA No.

	JFFMA	JECFA	FCC
Chemical name	l-menthyl propionate		
Content (NLT)	98.0 % (GC)		
Refractive index	1.443-1.449 (n <sub>20D</sub> )		
Specific gravity	0.917-0.923 (d <sub>20/20</sub> )		
Acid value (NMT)	1.0		
Melting/Congeealing point			
Angular/Specific rotation	AR: -71 to -67° (α 20D)		
Heavy metals (NMT)			
Solubility in ethanol			
Other requirements			
Identification*	IR	:3	
	MS	:3	
	NMR	:3	

### \*References

- 1: Joint FAO/WHO Expert Committee on Food Additive (JECFA)
- 2: Food Chemicals Codex (FCC)
- 3: 有機化合物のスペクトルデータベース SDBS(独立行政法人産業技術総合研究所)
- 4: Wiley's Registry of Mass spectral Database
- 5: NIST/EPA/NIH Mass Spectral Library
- 6: Sigma-Aldrich