

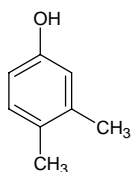
3,4-dimethylphenol

3,4-ジメチルフェノール

Formula C₈H₁₀O

Mol. Wt. 122.16

CAS No. 95-65-8



SEQ No. 2511 フェノール類

FEMA No. 3596

JECFA No. 708

	JFFMA	JECFA	FCC
Chemical name	3,4-dimethylphenol	3,4-Xylenol	
Content (NLT)	97.0 % (GC)	98 %	
Refractive index			
Specific gravity			
Acid value (NMT)			
Melting/Congeealing point	MP: 62 to 69°C	MP: 62 to 68°C	
Angular/Specific rotation			
Heavy metals (NMT)			
Solubility in ethanol		moderately soluble	
Other requirements			
Identification*	IR : 1,3,6 MS : 3,4,5 NMR : 3,6	IR	

*References

- 1: Joint FAO/WHO Expert Committee on Food Additive (JECFA)
- 2: Food Chemicals Codex (FCC)
- 3: 有機化合物のスペクトルデータベース SDBS(独立行政法人産業技術総合研究所)
- 4: Wiley's Registry of Mass spectral Database
- 5: NIST/EPA/NIH Mass Spectral Library
- 6: Sigma-Aldrich