

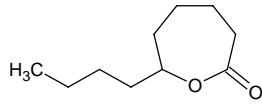
# epsilon-decalactone

## ε-デカラクトン

Formula C<sub>10</sub>H<sub>18</sub>O<sub>2</sub>

Mol. Wt. 170.25

CAS No. 5579-78-2



SEQ No. 719 ラクトン類

FEMA No. 3613

JECFA No. 241

	JFFMA	JECFA	FCC
Chemical name	epsilon-decalactone	epsilon-Decalactone	
Content (NLT)	98.0 % (GC)	99 %	
Refractive index	1.458-1.465 (n <sub>20D</sub> )	1.458-1.463 (n <sub>20D</sub> )	
Specific gravity	0.976-0.982 (d <sub>20/20</sub> )	0.976 (d <sub>25/25</sub> )	
Acid value (NMT)	3.0		
Melting/Congeealing point			
Angular/Specific rotation			
Heavy metals (NMT)			
Solubility in ethanol			
Other requirements			
Identification*	IR : 1 MS : 4,5 NMR :	IR	

### \*References

- 1: Joint FAO/WHO Expert Committee on Food Additive (JECFA)
- 2: Food Chemicals Codex (FCC)
- 3: 有機化合物のスペクトルデータベース SDBS(独立行政法人産業技術総合研究所)
- 4: Wiley's Registry of Mass spectral Database
- 5: NIST/EPA/NIH Mass Spectral Library
- 6: Sigma-Aldrich