

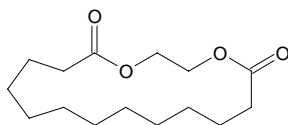
1,4-dioxacycloheptadecane-5,17-dione

1,4-ジオキサシクロヘプタデカン-5,17-ジオン

Formula C₁₅H₂₆O₄

Mol. Wt. 270.36

CAS No. 105-95-3



SEQ No. 911 ラクトン類

FEMA No. 3543

JECFA No. 626

	JFFMA	JECFA	FCC
Chemical name	1,4-dioxacycloheptadecane-5,17-dione	Ethylene brassylate	Ethylene Brassylate
Content (NLT)	93.0 % (GC)	95 %	95.0 % GC(M-1a)
Refractive index	1.466-1.476 (n _{20D})	1.468-1.474 (n _{20D})	1.468-1.473 (n _{20D})
Specific gravity	1.041-1.051 (d _{20/20})	1.040-1.045 (d _{25/25})	1.040-1.045 (d _{25/25})
Acid value (NMT)		1.0	1.0
Melting/Congeealing point		CP: 0 to 7°C	
Angular/Specific rotation			
Heavy metals (NMT)			
Solubility in ethanol		1 mL in 1 mL alcohol	1 mL in 1 mL 95% alc
Other requirements			
Identification*	IR : 1,2,5 MS : 4,5 NMR :	IR	IR

*References

- 1: Joint FAO/WHO Expert Committee on Food Additive (JECFA)
- 2: Food Chemicals Codex (FCC)
- 3: 有機化合物のスペクトルデータベース SDBS(独立行政法人産業技術総合研究所)
- 4: Wiley's Registry of Mass spectral Database
- 5: NIST/EPA/NIH Mass Spectral Library
- 6: Sigma-Aldrich