

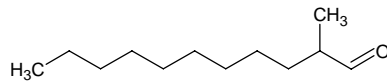
2-methylundecanal

2-メチルウンデカナル

Formula C₁₂H₂₄O

Mol. Wt. 184.32

CAS No. 110-41-8



SEQ No. 1895 脂肪族高級アルデヒド類

FEMA No. 2749

JECFA No. 275

| | JFFMA | JECFA | FCC |
|---------------------------|-------------------------------------|-----------------------------------|-----------------------------------|
| Chemical name | 2-methylundecanal | 2-Methylundecanal | 2-Methylundecanal |
| Content (NLT) | 94.0 % (GC) | 97 % | 94.0 % GC(M-1b) |
| Refractive index | 1.428-1.438 (n _{20D}) | 1.431-1.436 (n _{20D}) | 1.431-1.436 (n _{20D}) |
| Specific gravity | 0.823-0.833 (d _{20/20}) | 0.822-0.830 (d _{25/25}) | 0.822-0.830 (d _{25/25}) |
| Acid value (NMT) | 10.0 | 10 | 10.0 |
| Melting/Congeealing point | | | |
| Angular/Specific rotation | | | |
| Heavy metals (NMT) | | | |
| Solubility in ethanol | | | |
| Other requirements | | | |
| Identification* | IR : 1,2,5,6 MS : 4,5 NMR : 6 | IR | IR |

*References

- 1: Joint FAO/WHO Expert Committee on Food Additive (JECFA)
- 2: Food Chemicals Codex (FCC)
- 3: 有機化合物のスペクトルデータベース SDBS(独立行政法人産業技術総合研究所)
- 4: Wiley's Registry of Mass spectral Database
- 5: NIST/EPA/NIH Mass Spectral Library
- 6: Sigma-Aldrich