

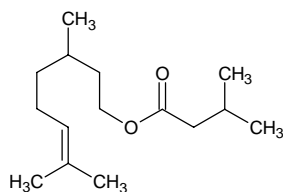
# citronellyl isovalerate

## シトロネリル イソバレレート

Formula C<sub>15</sub>H<sub>28</sub>O<sub>2</sub>

Mol. Wt. 240.38

CAS No. 68922-10-1



SEQ No. 412 エステル類

FEMA No.

JECFA No.

	JFFMA	JECFA	FCC
Chemical name	citronellyl isovalerate		
Content (NLT)	98.0 % (Chem)		
Refractive index	1.440-1.446 (n <sub>20D</sub> )		
Specific gravity	0.871-0.877 (d <sub>20/20</sub> )		
Acid value (NMT)	1.0		
Melting/Congeealing point			
Angular/Specific rotation			
Heavy metals (NMT)			
Solubility in ethanol			
Other requirements	tetrahydrogeranyl isovalerateを含む		
Identification*	IR : 3		
	MS : 3,4		
	NMR : 3		

### \*References

- 1: Joint FAO/WHO Expert Committee on Food Additive (JECFA)
- 2: Food Chemicals Codex (FCC)
- 3: 有機化合物のスペクトルデータベース SDBS(独立行政法人産業技術総合研究所)
- 4: Wiley's Registry of Mass spectral Database
- 5: NIST/EPA/NIH Mass Spectral Library
- 6: Sigma-Aldrich