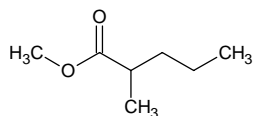


# methyl 2-methylpentanoate

## メチル 2-メチルペンタノエート

Formula C7H14O2

Mol. Wt. 130.18



CAS No. 2177-77-7

SEQ No. 1592 エステル類

FEMA No. 3707

JECFA No. 213

	JFFMA	JECFA	FCC
Chemical name	methyl 2-methylpentanoate	Methyl 2-methylpentanoate	
Content (NLT)	98.0 % (GC)	98 %	
Refractive index	1.400-1.406 (n20D)	1.400-1.405 (n20D)	
Specific gravity	0.877-0.883 (d20/20)	0.875-0.881 (d25/25)	
Acid value (NMT)	1.0		
Melting/Congeealing point			
Angular/Specific rotation			
Heavy metals (NMT)			
Solubility in ethanol			
Other requirements			
Identification*	IR :1,3 MS :4,5 NMR :3	IR	

### \*References

- 1: Joint FAO/WHO Expert Committee on Food Additive (JECFA)
- 2: Food Chemicals Codex (FCC)
- 3: 有機化合物のスペクトルデータベース SDBS(独立行政法人産業技術総合研究所)
- 4: Wiley's Registry of Mass spectral Database
- 5: NIST/EPA/NIH Mass Spectral Library
- 6: Sigma-Aldrich