

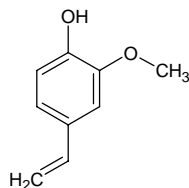
4-ethenyl-2-methoxyphenol

4-エテニル-2-メトキシフェノール

Formula C₉H₁₀O₂

Mol. Wt. 150.17

CAS No. 7786-61-0



SEQ No. 2504 フェノール類

FEMA No. 2675

JECFA No. 725

	JFFMA	JECFA	FCC
Chemical name	4-ethenyl-2-methoxyphenol	2-Methoxy-4-vinylphenol	
Content (NLT)	96.0 % (GC)	96 %	
Refractive index	1.570-1.587 (n _{20D})	1.534-1.538 (n _{20D})	
Specific gravity	1.100-1.115 (d _{20/20})	1.090-1.096 (d _{25/25})	
Acid value (NMT)			
Melting/Congeealing point			
Angular/Specific rotation			
Heavy metals (NMT)			
Solubility in ethanol		miscible	
Other requirements			
Identification*	IR : 1,5,6 MS : 4,5 NMR :	IR	

*References

- 1: Joint FAO/WHO Expert Committee on Food Additive (JECFA)
- 2: Food Chemicals Codex (FCC)
- 3: 有機化合物のスペクトルデータベース SDBS(独立行政法人産業技術総合研究所)
- 4: Wiley's Registry of Mass spectral Database
- 5: NIST/EPA/NIH Mass Spectral Library
- 6: Sigma-Aldrich