

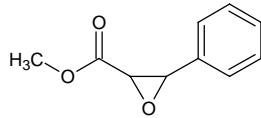
methyl beta-phenylglycidate

メチル β-フェニルグリシデート

Formula C₁₀H₁₀O₃

Mol. Wt. 178.18

CAS No. 37161-74-3



SEQ No. 1633 エステル類

FEMA No. 4654

JECFA No.

	JFFMA	JECFA	FCC
Chemical name	methyl beta-phenylglycidate		
Content (NLT)	97.0 % (Chem)		
Refractive index	1.522-1.536 (n _{20D})		
Specific gravity	1.165-1.175 (d ₂₀ /20)		
Acid value (NMT)	1.0		
Melting/Congeaing point			
Angular/Specific rotation			
Heavy metals (NMT)			
Solubility in ethanol			
Other requirements			
Identification*	IR :		
	MS :4,5		
	NMR :		

*References

- 1: Joint FAO/WHO Expert Committee on Food Additive (JECFA)
- 2: Food Chemicals Codex (FCC)
- 3: 有機化合物のスペクトルデータベース SDBS(独立行政法人産業技術総合研究所)
- 4: Wiley's Registry of Mass spectral Database
- 5: NIST/EPA/NIH Mass Spectral Library
- 6: Sigma-Aldrich