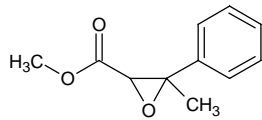


# methyl beta-methyl-beta-phenylglycidate

## メチル β-メチル-β-フェニルグリシデート

Formula C<sub>11</sub>H<sub>12</sub>O<sub>3</sub>

Mol. Wt. 192.21



CAS No.

SEQ No. 1607 エステル類

FEMA No.

JECFA No.

	JFFMA	JECFA	FCC
Chemical name	methyl beta-methyl-beta-phenylglycidate		
Content (NLT)	98.0 % (Chem)		
Refractive index	1.509–1.517 (n <sub>20D</sub> )		
Specific gravity	1.122–1.130 (d <sub>20</sub> /20)		
Acid value (NMT)	1.0		
Melting/Congeealing point			
Angular/Specific rotation			
Heavy metals (NMT)			
Solubility in ethanol			
Other requirements			
Identification*	IR :3		
	MS :3		
	NMR :3		

### \*References

- 1: Joint FAO/WHO Expert Committee on Food Additive (JECFA)
- 2: Food Chemicals Codex (FCC)
- 3: 有機化合物のスペクトルデータベース SDBS(独立行政法人産業技術総合研究所)
- 4: Wiley's Registry of Mass spectral Database
- 5: NIST/EPA/NIH Mass Spectral Library
- 6: Sigma-Aldrich