

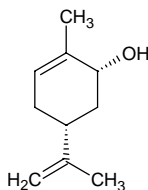
l-carveol

l-カルベオール

Formula C₁₀H₁₆O

Mol. Wt. 152.23

CAS No. 2102-59-2



SEQ No. 342 脂肪族高級アルコール類

FEMA No. 2247

JECFA No. 381

	JFFMA	JECFA	FCC
Chemical name	l-carveol	Carveol	L-Carveol
Content (NLT)	95.0 % (GC)	96.0 % (Z) isomer 45%+/-5%, (E) isomer 55%+/-5%	96.0 % GC(M-1b)
Refractive index	1.491-1.501 (n ₂₀ D)	1.493-1.497 (n ₂₀ D)	1.493-1.497 (n ₂₀ D)
Specific gravity	0.949-0.959 (d ₂₀ /20)	0.947-0.953 (d ₂₅ /25)	0.947-0.953 (d ₂₅ /25)
Acid value (NMT)			
Melting/Congeealing point			
Angular/Specific rotation	AR: -135 to -118° (α ₂₀ D)	OR: -130 to -117°	AR: -130 to -117°
Heavy metals (NMT)			
Solubility in ethanol		1 ml in 1 ml 95% alcohol	1 mL in 1 mL 95% alc
Other requirements			
Identification*	IR :1,2 MS :4 NMR :	IR	IR

*References

- 1: Joint FAO/WHO Expert Committee on Food Additive (JECFA)
- 2: Food Chemicals Codex (FCC)
- 3: 有機化合物のスペクトルデータベース SDBS(独立行政法人産業技術総合研究所)
- 4: Wiley's Registry of Mass spectral Database
- 5: NIST/EPA/NIH Mass Spectral Library
- 6: Sigma-Aldrich