

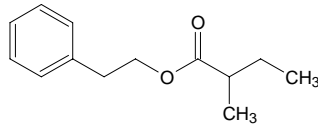
# phenethyl 2-methylbutyrate

## フェネチル 2-メチルブチレート

Formula C<sub>13</sub>H<sub>18</sub>O<sub>2</sub>

Mol. Wt. 206.28

CAS No. 24817-51-4



SEQ No. 2101 エステル類

FEMA No. 3632

JECFA No. 993

	JFFMA	JECFA	FCC
Chemical name	phenethyl 2-methylbutyrate	Phenethyl 2-methylbutyrate	2-Phenethyl 2-Methylbutyrate
Content (NLT)	95.0 % (GC)	95 %	95.0 % GC(M-1b)
Refractive index	1.481-1.489 (n <sub>20D</sub> )	1.481-1.489 (n <sub>20D</sub> )	1.484-1.488 (n <sub>20D</sub> )
Specific gravity	0.976-0.986 (d <sub>20/20</sub> )	0.974-0.980 (d <sub>25/25</sub> )	0.973-0.977 (d <sub>25/25</sub> )
Acid value (NMT)	2.0	2.0	2.0
Melting/Congeaing point			
Angular/Specific rotation			
Heavy metals (NMT)			
Solubility in ethanol		Miscible at room temperature	
Other requirements			
Identification*	IR :6 MS :4,5 NMR :1,6	NMR	

### \*References

- 1: Joint FAO/WHO Expert Committee on Food Additive (JECFA)
- 2: Food Chemicals Codex (FCC)
- 3: 有機化合物のスペクトルデータベース SDBS(独立行政法人産業技術総合研究所)
- 4: Wiley's Registry of Mass spectral Database
- 5: NIST/EPA/NIH Mass Spectral Library
- 6: Sigma-Aldrich