

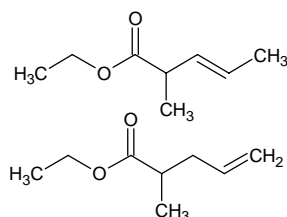
# ethyl 2-methyl-(3or4)-pentenoate

## エチル 2-メチル-(3or4)-ペンテノエート

Formula C<sub>8</sub>H<sub>14</sub>O<sub>2</sub>

Mol. Wt. 142.20

CAS No. 1617-23-8



SEQ No. 762 エステル類

FEMA No.

JECFA No.

	JFFMA	JECFA	FCC
Chemical name	ethyl 2-methyl-(3or4)-pentenoate		
Content (NLT)	95.0 % (GC) sum of isomers		
Refractive index	1.415-1.425 (n <sub>20D</sub> )		
Specific gravity	0.883-0.893 (d <sub>20/20</sub> )		
Acid value (NMT)	1.0		
Melting/Congeealing point			
Angular/Specific rotation			
Heavy metals (NMT)			
Solubility in ethanol			
Other requirements			
Identification*	IR :3		
	MS :3		
	NMR :3		

### \*References

- 1: Joint FAO/WHO Expert Committee on Food Additive (JECFA)
- 2: Food Chemicals Codex (FCC)
- 3: 有機化合物のスペクトルデータベース SDBS(独立行政法人産業技術総合研究所)
- 4: Wiley's Registry of Mass spectral Database
- 5: NIST/EPA/NIH Mass Spectral Library
- 6: Sigma-Aldrich