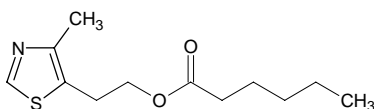


2-(4-methyl-5-thiazolyl)ethyl hexanoate

2-(4-メチル-5-チアゾリル)エチル ヘキサノエート

Formula C₁₂H₁₉NO₂S

Mol. Wt. 241.35



CAS No. 94159-32-7

SEQ No. 2311 エステル類

FEMA No. 4279

JECFA No. 1755

	JFFMA	JECFA	FCC
Chemical name	2-(4-methyl-5-thiazolyl)ethyl hexanoate	2-(4-Methyl-5-thiazolyl)ethyl hexanoate	
Content (NLT)	98.0 % (GC)	98 %	
Refractive index	1.491-1.497 (n _{20D})	1.492-1.497 (n _{20D})	
Specific gravity	1.065-1.071 (d _{20/20})	1.065-1.071 (d _{25/25})	
Acid value (NMT)	1.0	1	
Melting/Congeeing point			
Angular/Specific rotation			
Heavy metals (NMT)			
Solubility in ethanol		Soluble	
Other requirements			
Identification*	IR :3 MS :3 NMR :1,3	HNMR	

*References

- 1: Joint FAO/WHO Expert Committee on Food Additive (JECFA)
- 2: Food Chemicals Codex (FCC)
- 3: 有機化合物のスペクトルデータベース SDBS(独立行政法人産業技術総合研究所)
- 4: Wiley's Registry of Mass spectral Database
- 5: NIST/EPA/NIH Mass Spectral Library
- 6: Sigma-Aldrich