

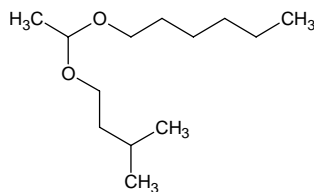
acetaldehyde hexyl isoamyl acetal

アセトアルデヒド ヘキシル イソアミル アセタール

Formula C₁₃H₂₈O₂

Mol. Wt. 216.36

CAS No. 233665-90-2



SEQ No. 34 エーテル類

FEMA No. 4365

JECFA No. 1727

	JFFMA	JECFA	FCC
Chemical name	acetaldehyde hexyl isoamyl acetal	Acetaldehyde hexyl isoamyl acetal	
Content (NLT)	97.0 % (GC) sum of acetaldehyde hexyl isoamyl acetal(ca.52%), acetaldehyde dihexyl acetal(ca.27%) and acetaldehyde diisoamyl acetal(ca.18%)	97 % sum of three components	
Refractive index	1.418-1.423 (n _{20D})	1.418-1.423 (n _{20D})	
Specific gravity	0.833-0.838 (d ₂₀ /20)	0.833-0.838 (d ₂₅ /25)	
Acid value (NMT)	1.0		
Melting/Congeeing point			
Angular/Specific rotation			
Heavy metals (NMT)			
Solubility in ethanol		Soluble	
Other requirements			
Identification*	IR : MS :1 NMR :3	MS	

*References

- 1: Joint FAO/WHO Expert Committee on Food Additive (JECFA)
- 2: Food Chemicals Codex (FCC)
- 3: 有機化合物のスペクトルデータベース SDBS(独立行政法人産業技術総合研究所)
- 4: Wiley's Registry of Mass spectral Database
- 5: NIST/EPA/NIH Mass Spectral Library
- 6: Sigma-Aldrich