

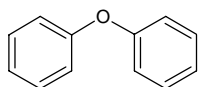
diphenyl ether

ジフェニル エーテル

Formula C₁₂H₁₀O

Mol. Wt. 170.21

CAS No. 101-84-8



SEQ No. 680 フェノールエーテル類

FEMA No. 3667

JECFA No. 1255

	JFFMA	JECFA	FCC
Chemical name	diphenyl ether	Diphenyl ether	Diphenyl Ether
Content (NLT)	98.0 % (GC)	99 %	99.0 % GC(M-1b)
Refractive index		1.578–1.583 (n _{20D})	
Specific gravity		1.071–1.075 (d _{25/25})	1.070–1.074 (d _{25/25})
Acid value (NMT)		0.5	
Melting/Congeeing point	MP: 26 to 30°C	MP: 26.8°C	MP: 26.0 to 30.0°C
Angular/Specific rotation			
Heavy metals (NMT)			
Solubility in ethanol		soluble	1 g in 2 mL 95% ethanol
Other requirements			
Identification*	IR :2,3,6 MS :3,4,5 NMR :1,3,6	NMR	IR

*References

- 1: Joint FAO/WHO Expert Committee on Food Additive (JECFA)
- 2: Food Chemicals Codex (FCC)
- 3: 有機化合物のスペクトルデータベース SDBS(独立行政法人産業技術総合研究所)
- 4: Wiley's Registry of Mass spectral Database
- 5: NIST/EPA/NIH Mass Spectral Library
- 6: Sigma-Aldrich