

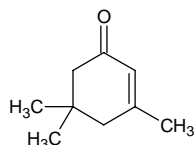
isophorone

イソホロン

Formula C₉H₁₄O

Mol. Wt. 138.21

CAS No. 78-59-1



SEQ No. 1397 ケトン類

FEMA No. 3553

JECFA No. 1112

	JFFMA	JECFA	FCC
Chemical name	isophorone	Isophorone	
Content (NLT)	97.0 % (GC)	97 %	
Refractive index	1.475-1.481 (n _{20D})	1.474-1.481 (n _{20D})	
Specific gravity	0.920-0.926 (d _{20/20})	0.919-0.927 (d _{25/25})	
Acid value (NMT)		1.0	
Melting/Congeealing point			
Angular/Specific rotation			
Heavy metals (NMT)			
Solubility in ethanol		Miscible at room temperature	
Other requirements			
Identification*	IR :3,6 MS :4,5 NMR :1,6	NMR	

*References

- 1: Joint FAO/WHO Expert Committee on Food Additive (JECFA)
- 2: Food Chemicals Codex (FCC)
- 3: 有機化合物のスペクトルデータベース SDBS(独立行政法人産業技術総合研究所)
- 4: Wiley's Registry of Mass spectral Database
- 5: NIST/EPA/NIH Mass Spectral Library
- 6: Sigma-Aldrich