

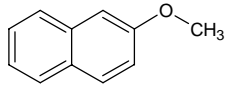
# methyl 2-naphthyl ether

## メチル 2-ナフチル エーテル

Formula C<sub>11</sub>H<sub>10</sub>O

Mol. Wt. 158.20

CAS No. 93-04-9



SEQ No. 1570 フェノールエーテル類

FEMA No.

JECFA No. 1257

	JFFMA	JECFA	FCC
Chemical name	methyl 2-naphthyl ether	beta-Naphthyl methyl ether	
Content (NLT)	98.0 % (GC)	99 %	
Refractive index			
Specific gravity			
Acid value (NMT)		1	
Melting/Congeeing point	MP: 70 to 75°C	MP: 73 to 75°C	
Angular/Specific rotation			
Heavy metals (NMT)			
Solubility in ethanol		soluble	
Other requirements			
Identification*	IR : MS :4,5 NMR :1	NMR	

### \*References

- 1: Joint FAO/WHO Expert Committee on Food Additive (JECFA)
- 2: Food Chemicals Codex (FCC)
- 3: 有機化合物のスペクトルデータベース SDBS(独立行政法人産業技術総合研究所)
- 4: Wiley's Registry of Mass spectral Database
- 5: NIST/EPA/NIH Mass Spectral Library
- 6: Sigma-Aldrich