

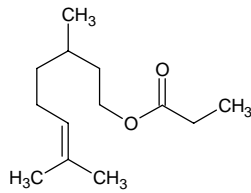
citronellyl propionate

シトロネリル プロピオネート

Formula C₁₃H₂₄O₂

Mol. Wt. 212.33

CAS No. 141-14-0



SEQ No. 397 エステル類

FEMA No. 2316

JECFA No. 61

	JFFMA	JECFA	FCC
Chemical name	citronellyl propionate	Citronellyl propionate	Citronellyl Propionate
Content (NLT)	95.0 % (Chem)	90 % total esters	90.0 % total esters as C ₁₃ H ₂₄ O ₂ /Chem(Appendix IV; 1.2g/95.12)
Refractive index	1.440-1.450 (n _{20D})	1.443-1.449 (n _{20D})	1.443-1.449 (n _{20D})
Specific gravity	0.880-0.890 (d _{20/20})	0.877-0.886 (d _{25/25})	0.877-0.886 (d _{25/25})
Acid value (NMT)	1.0	1	1.0
Melting/Congeaing point			
Angular/Specific rotation			
Heavy metals (NMT)			
Solubility in ethanol		1 ml in 4 ml 80% alcohol gives clear soln	1 mL in 4 mL 80% alc gives clear soln
Other requirements		SC: citronellol	
Identification*	IR :1,2 MS :4,5 NMR :	IR	IR

*References

- 1: Joint FAO/WHO Expert Committee on Food Additive (JECFA)
- 2: Food Chemicals Codex (FCC)
- 3: 有機化合物のスペクトルデータベース SDBS(独立行政法人産業技術総合研究所)
- 4: Wiley's Registry of Mass spectral Database
- 5: NIST/EPA/NIH Mass Spectral Library
- 6: Sigma-Aldrich