

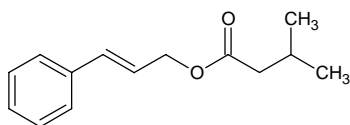
cinnamyl isovalerate

シンナミル イソバレレート

Formula C₁₄H₁₈O₂

Mol. Wt. 218.29

CAS No. 140-27-2



SEQ No. 387 エステル類

FEMA No. 2302

JECFA No. 654

	JFFMA	JECFA	FCC
Chemical name	cinnamyl isovalerate	Cinnamyl isovalerate	Cinnamyl Isovalerate
Content (NLT)	95.0 % (GC)	95 %	95.0 % one major isomer /GC(M-1b)
Refractive index	1.514-1.524 (n _{20D})	1.517-1.524 (n _{20D})	1.518-1.524 (n _{20D})
Specific gravity	0.989-0.999 (d _{20/20})	0.990-0.996 (d _{25/25})	0.991-0.996 (d _{25/25})
Acid value (NMT)	1.0	3.0	3.0
Melting/Congeealing point			
Angular/Specific rotation			
Heavy metals (NMT)			
Solubility in ethanol		miscible	1 mL in 1 mL 90% alc
Other requirements			
Identification*	IR :1,2,3,5,6 MS :3,4,5 NMR :3,6	IR	IR

*References

- 1: Joint FAO/WHO Expert Committee on Food Additive (JECFA)
- 2: Food Chemicals Codex (FCC)
- 3: 有機化合物のスペクトルデータベース SDBS(独立行政法人産業技術総合研究所)
- 4: Wiley's Registry of Mass spectral Database
- 5: NIST/EPA/NIH Mass Spectral Library
- 6: Sigma-Aldrich