

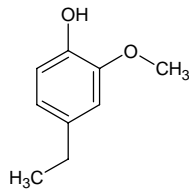
4-ethyl-2-methoxyphenol

4-エチル-2-メキシフェノール

Formula C₉H₁₂O₂

Mol. Wt. 152.19

CAS No. 2785-89-9



SEQ No. 916 フェノール類

FEMA No. 2436

JECFA No. 716

	JFFMA	JECFA	FCC
Chemical name	4-ethyl-2-methoxyphenol	4-Ethylguaiacol	4-Ethyl Guaiacol
Content (NLT)	97.0 % (GC)	98 %	98.0 % GC(M-1a)
Refractive index	1.524-1.534 (n _{20D})	1.524-1.534 (n _{20D})	1.525-1.530 (n _{20D})
Specific gravity	1.058-1.070 (d _{20/20})	1.056-1.066 (d _{25/25})	1.061-1.064 (d _{25/25})
Acid value (NMT)			
Melting/Congeealing point			
Angular/Specific rotation			
Heavy metals (NMT)			
Solubility in ethanol		miscible	1 mL in 1 mL 95% alc
Other requirements			
Identification*	IR : 1,2,6 MS : 1,4,5 NMR :	IR, MS	IR

*References

- 1: Joint FAO/WHO Expert Committee on Food Additive (JECFA)
- 2: Food Chemicals Codex (FCC)
- 3: 有機化合物のスペクトルデータベース SDBS(独立行政法人産業技術総合研究所)
- 4: Wiley's Registry of Mass spectral Database
- 5: NIST/EPA/NIH Mass Spectral Library
- 6: Sigma-Aldrich